



MARKET UPDATES

Week of March 24, 2024



Seafood

LOCAL HADDOCK

- Reminder: Spawning season has started.

LIVE LOBSTERS

- Reminder Price expected to increase this week.
- Keeping very limited amounts in stock on both the 1 ¼ & 1 ½ lb.
- Reminder: please preorder.

BEAU SOLEIL, RASPBERRY OYSTERS, SAVAGE BLONDES HAS JOINED THE LIST

- Reminder out of stock with our vendor. A good sub for the 100ct #VP3660 Black magic, #NW824 Irish Points Oysters 100ct harvested in PEI.
- Can reach out to the seafood team for suggestions.

FROZEN OCTOPUS 4-6 LB

- #EP172/ 3 Out of stock at the with our vendor.

FROZEN OCTOPUS 6-8 LB

- #GG762 back in stock.

Meat

BLACK RIVER MEATS HOT DOGS

- #WB006, BRM Hot Dogs — New batch in production and expected to be in house this week.

BELLA BELLA DUCK

- Reminder: Duck Breast Pastrami Single Ref (#WA804) is now a stocked item!

MISTY KNOLL

- Pack size on Misty Knoll Chicken Bones has changed from 1/50lb case to 1/25lb case with the product cryovaced.
- Product code #WA422 has been updated.
- Change will prevent damage incurring regularly with shipment and delivery.



QR code to view Misty Knoll Items and order schedule.

Specialty / Grocery

OUR HOUSE

- Traditional mac and cheese, #GH552, is now back in stock. Flavored macs expected by next week.

MOSKSHA FARM

- Orders for eggrolls have resumed with product expected to land on March 29 (#WB236)

OLD CAVENDISH

- Unfortunately, Old Cavendish has decided to close their doors. In the coming days, we will know how many cases they will be able to produce before shutdown.

PATRIOT PICKLES

- Vendor has discontinued the Natural Harvest bread and butter pickles, #WC284, and the sweet horseradish chips, #NB494.

VERMONT NUT FREE CHOCOLATES

- Vendor has been extra busy preparing for Easter so we will be low/out of sun blossoms until March 28 or later.



Dairy

BUTTER MARKET

- Market has remained steady for more than 4 weeks. Nothing new to report.

CHEESE MARKET

- Market remains unchanged. Market is trending down. Nothing too earth shattering but keeping an eye on it.

SHELL EGGS

- Market continues to be active as retailers are covering needs for the upcoming holidays.

BOCCONCINI

- Reminder: Maplebrook Bocconcini (C9938) will be moving to special order. Item will be stocked again the week before 7/4.

CREAM CHEESE 10x3#

- Vendor is going through a SKU reduction. Green Mtn Farms cream cheese #91300 is now discontinued.
- Replacement is Hahn's label #FR898; exact same cream cheese still made with milk from the St Alban's coop. We will be out of this till 4/4 however.
- Still have a commodity cream cheese #EH514.

MT. MANSFIELD

- Vendor will be reducing the number of cheeses they produce. At times they were producing up to 11 cheese last year which caused some outages.
- They will be making Halfpipe, Chin Clip, Forerunner, and Patrolman's Blues.
- All other items will be suspended. Others like Inspiration and Laney Rose might be available later.

New / Reactivated Items

#EK484	Pixie Tangerine	9x2 Lb.	In-stock Seasonal Item
WA986	Pixie Tangerine	8x3 Lb.	In-stock Seasonal Item
#NW712	English Peas		Seasonal Late Line
#H1160	Fava Beans		Seasonal Late Line

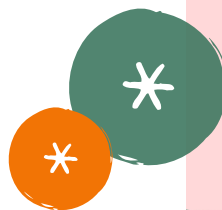
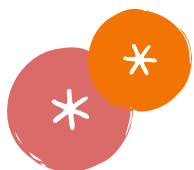
Discontinued / Deactivated Items

#EJ710	Delicata Squash		done for the season
Patriot Pickles			
#WC284	Pickle Candied Chip Bread and Butter	12/32oz.	Natural Harvest
#NB494	Pickle Sweet Horseradish Chip	12/32oz	Natural Harvest
Green Mountain Farms			
#91300	Cream Cheese (replaced by the Hahn's label #FR898.	10 x 3 Lb	Green Mountain Farms

YUM!

Ojai Pixie Tangerines

#EK484 Pixie Tangerine 9 x 2 Lb
#WA986 Pixie Tangerine 8 x 3 Lb



PRODUCE

APPLES

- Market remains unchanged.
- Possible to see some gapping on the New York honey crisp within the next few weeks as the storage crops are all most out. We will then move out to Washington.

ASPARAGUS

- Pricing has started to climb as we approach Easter. Quality remains good out of Mexico.

AVOCADOES

- Market remains unchanged.
- Equal Exchange organic avocados are back with normal yields and should be stable until May.
- Conventional avocados are remaining fairly flat over all.

BLACKBERRIES CV/OG

- Market remains unchanged. Good supply out of Mexico. Quality has been solid with good coloring.



BLUEBERRIES CV

- Pricing has started to increase on blues.
- Good supply out of Mexico.
- Peru season is coming to an end and Florida is just starting with light numbers.

BROCCOLI CV/OG

- Crowns will be in light supply for the next 7-10 days.
- Pricing is up.
- Still seeing some occasional yellowing on arrival.

BROCCOLINI

- Growers reporting fair quality for coming the coming week.
- Brown bead and flowering.

BRUSSELS SPROUTS CV/OG

- Market remains unchanged with good supply and quality.

CAULIFLOWER CV/OG

- Good supply this week after a dip in volume for the last week or so.
- Market should remain steady through this week with good quality.

CELERY CV/OG

- Pricing starting to come off the floor it has been sitting on for last month. Change expected to be relatively gradual with no large spikes in demand in the forecast.

CUCUMBERS

- Market remains unchanged.
- Expect to see further price escalations on cucumbers as poor arrivals from Honduras and Mexico have put extra pressure on the domestic market.

LEMONS CV/OG

- Market expected to remain steady over coming weeks.
- Seeing some minor defects and scarring on arrival.

LETTUCE CV/OG

- West Coast growers are starting to prepare for the transition out of the desert to northern growing regions. Some suppliers will be starting up in Salinas in the first week of April while others will remain in Yuma until mid-April.
- Growers continue to struggle with quality issues in the field.
- Processors will start to eat up acreage to stay ahead of production delays during the move north. These factors have driven pricing up quickly..
- Volume and quality should improve quickly as we move into April.

LETTUCE, LITTLE LEAF

- Little Leaf is still anticipating shortages for the next 4 weeks due to yield issues.
- BRP will be allocated roughly 60% of our order.
- Retail 4oz clamshells should be unaffected.

LIMES

- Pricing is on the rise again.
- Volume out of Mexico will be very limited towards the end of next week as shippers halt all operations during Holy Week.

ONIONS

- Starting to see some smaller sheds in the Northwest start to finish up with their storage crop.
- Expect to be able to stay with our Idaho onion crop until April. Then we might transition down to Texas which is scheduled to start in mid-March.

ORANGES CV/OG

- Supply remains very tight on 88ct and smaller.
- Quality is holding steady with good brix and color.
- Blood oranges and Cara Cara navels remain strong along with domestic 10x3lb mandarins.
- Pixie Tangerines are expected to be in good supply through April. Quality has been excellent.

PEPPERS

- Market remains unchanged.
- Seeing pricing increases on most pepper lines. Pressure from El Nino is still impacting volume.
- Red bushels peppers are seeing some of the higher price increases.

POTATOES (IDAHO)

- Market remains unchanged.
- We are into the new Peak codes.
- Larger 40/50ct potatoes are becoming a bit tight so pricing is slightly elevated.
- Smaller counts are strong and plentiful.

RASPBERRIES CV/OG

- Forecast is for a gradual uptrend in volume over the next 4 to 5 weeks.
- Quality has been mostly good with occasional crumbled berry and light color.

SCALLIONS

- Market remains unchanged. Quality is improving week over week with improved weather in growing areas.

SPRING VEG

- English Peas #NW712 and Fava Beans #H1160; Starting to see light supply popping up in the market. Both are lateline items.

STRAWBERRIES CV/OG

- Strawberry situation in California is improving.
- Volume is expected to improve rapidly in April.
- Florida is on the tail end of their season.
- Expect aggressive pricing to continue this week.

TENDER LEAF ITEMS

- Quality has improved greatly this week on arugula with great color and size.
- Growers still reporting some occasional burn and yellowing on mesclun, Arcadian Spring Mix and spinach.

TOMATOES

- Market remains unchanged.
- Still seeing supply issues in Florida and Mexico.
- Mexico is slowly picking up but not enough to turn the market lower yet.
- Grape and cherry tomato pints are also still tight, and pricing is elevated.

WATERMELONS

- Market remains unchanged.
- Starting to see gapping on watermelons.
- Market should be filling back up in two weeks once Florida starts with their crop..

EVENTS MADE EASY

Chef's Artisan Assorted Vermont Cheese Boxes



Each box contains
equal portions of 5
cheeses at a single,
convenient price point.
Ideal for budgeting
events.

WB938 Artisan Cheese 14.25 LB Box

WB940 Premier Cheese 14.25 LB Box

Order Today at BlackRiverProduce.com or call 800-228-5481