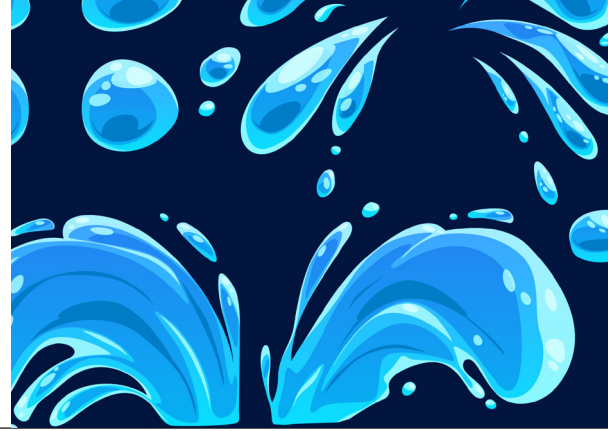




MARKET UPDATES

Week of April 6, 2025



Seafood

LIVE LOBSTERS

- Price holding firm.
- Keeping inventory tight.
- #EP094, Lobster 1¼lb in stock with limited supply.
- #EH046, Lobster 1½lb now preorder only due to low demand.

HALIBUT FILLET

- Slight price increase.

SWORD LOIN

- Price holding.

ICELANDIC COD & HADDOCK

- Haddock and cod pricing will be going up in April as it does every year in reaction to the annual fisheries management closures in Iceland. Right now, we are seeing a 4-mile closure for spawning that will expand to a 14-mile closure on the 11th, This will stay closed until the 21st of April. This closure occurs every year and is one of the primary reasons that Iceland has one of the most successful and sustainable fisheries in the world.

SCALLOPS

- Dry 20-30's price decrease.
- Dry 10-20's price holding.

LOCAL HADDOCKS SCROD, SMALL

- Spawning season starting.
- Anticipated quality issues with fillets include thinness and breakage.

SEASONAL - STOCKED FOR THE WEEK!

- The following items will be brought in fresh daily for deliveries to customers on Thur-Fri-Sat, April 10,11,12.
- #GP321 Branzini Whole 2 Lb Avg (Turkey)
- #Walleye/Pike Fresh Fillet 1 Lb* (Canada)
- Advance notice is greatly appreciated to ensure we pull enough inventory to meet demand.
- View the full Seasonal, Fresh, Specialty Seafood list here: <https://blackriverproduce.com/resources/updates/#regional-seafood>

Meat

ARTISAN MEATS

- Artisan Meats raising prices starting 4/7.

CHICKEN THIGHS AND BREASTS

- Chicken thigh and breast shortages occurring across market.
- Expecting supply issues on the following codes:
- #WA252 Nature's Sensation Chicken Breast
- #EH492 Mountaire Boneless Skinless Thighs
- #J8746 Bell & Evans Chicken Thighs.

Specialty Grocery

ARCADE SNACKS

- #EH652, 1lb sundried tomatoes, will no longer be stocked and are special order only.
- Must take full 24x1lb case.
- Still stocking item #EH308, 5lb sundried tomatoes.

BOTTLED WATERS

- New Item Alert: Ascend bottled water is scheduled to land on 4.21.25.
- #DW540 Purified Water 24 x 16.9 Oz
- #DW542 Spring Water 24 x 16.9 Oz
- Great for retail, grab n go, golf courses, inns, camps and employee drinks in hot kitchens.

REAL GREEN DRESSINGS

- Reminder: New ranch dressing, #ACP50, landing 04.09.25.



Seasonal Fresh
Seafood List

New / Reactivated and Seasonal Items

#RM752	Cesar Salad Kit	6x7.4oz,
#AJG92	Blueberry Cream Top Yogurt	12x5.3oz,
#E6502	English Peas	10lb
#DW540	Purified Water	24 x 16.9 Oz
#DW542	Spring Water	24 x 16.9 Oz

Little Leaf (back after a brief gap)
 Brown Cow (new flavor starting April 21st)
 (new, seasonal)
 Ascend new! Landing 4.21.25
 Ascend new! Landing 4.21.25



Reminder:

#GH511	Brie	1x6.5oz	Vermont Farmstead (new split pack)
#ACP50	Dressing Ranch	6x8.5oz	Real Green (new)
#ADC24	Ojai PixieTangerines Bulk	25 lb.	(new pack size)
#WA986	Ojai PixieTangerines	9x3 lb.	
#EK484	Ojai Pixie Tangerines	9x2 lb.	(expected back on Wednesday 4/2)
#HHE70	Juice Pineapple 100%	6x32oz	Orchid Island (new)
#TL984	Basil Pesto, Nut-Free (frozen option)	4x3.25lb	Vegetaball's
#TL988	Basil Pesto (frozen option)	4x3.25lb	Vegetaball's
#HHE94	Basil Pesto No Salt (frozen option)	12x6.5oz	Vegetaball's
#TL986	Basil Pesto Spicy (frozen option)	12x6.5oz	Vegetaball's
#TL932	Yogurt Greek Plain 2%	17.5 Lb	Cabot Creamery (new)
#TL934	Yogurt Greek Strawberry 2%	17.5 Lb	Cabot Creamery (new)
#TL936	Yogurt Greek Vanilla 2%	17.5 Lb	Cabot Creamery (new)
#RC620	ORG Applewood Smkd Bacon Crumbles	16/2.5oz	North Country Smokehouse (new)
#AAW18	Chesapeake Cultured Butter	6/8oz	Ploughgate Creamery (new)
#LC904	Seaweed Cultured Butter	6/8oz	Ploughgate Creamery (now stocked)

Discontinued / Deactivated Items

#WC906	Glace Demi de Canard	20x1lb frozen	Bonewerks Culinarte (discontinued by vendor)
#WC907	Glace Demi de Canard	1x1lb frozen	Bonewerks Culinarte (discontinued by vendor)
#WC680	Sauce Shoyu Aged 2x130oz	Chef Myron's	(discontinued by vendor)
#EH652	Sundried Tomatoes	1lb	Arcade Snacks (special order, 24x1lb case only)

Dairy

Eggs

- Supply improving and prices coming down as days get longer.
- Greater availability across all Maple Meadows items.
- Pete & Gerry's still limited.

CABOT CREAMERY YOGURT

- Reminder: Now stocking low-fat Greek yogurts in 17.5 Lb tubs. Flavors include:
- #TL932 – Yogurt Greek Plain 2%
- #TL934 – Yogurt Greek Strawberry 2%
- #TL936 – Yogurt Greek Vanilla 2%
- See April sales flyers for discounts on Cabot butter, cheddars, and whipped cream.

BROWN COW YOGURT

- New flavor coming soon!
- Blueberry Cream Top Yogurt stocked as of April 21st; item code #AJG92.



Produce

APPLES

- MacIntosh Apples available out of Vermont from Sunrise Orchards.
- All other available apples from outside Vermont.
- Cider supply still plentiful - a great refreshing drink in the spring!

ASPARAGUS

- Product tight as we move to the second half of April.
- Increased Easter demand anticipated to strain the market.
- Pricing will increase through April.

AVOCADOES

- Anticipating no Equal Exchange organic avocados until the new crop starts in the fall.
- Continue to use item #WC780 for organic but not fair-trade avocados.
- Equal Exchange currently considering an organic, non-fair trade certified line since one of their main growers dropped the certificate.

BANANAS

- Imports remain tight.
- Anticipating market to improve next week as more vessels arrive from the Tropics.
- Cool and poor weather in the tropics and logistical challenges impacted recent global supply.
- Equal Exchange bananas still tight.
- Expect greener bananas
- More breaking/turning bananas will be available whenever possible.

BEANS

- Green bean market seeing steady volume and production.
- Very good quality.
- Now stocking a 10lb English pea while available. Use item code #E6502.

BLACKBERRIES CV/ OG

- Market expected to remain steady this week.
- Mexican supply anticipated to decrease from now through June.
- California berries will start in June.

BLUEBERRIES CV

- Mexican production anticipated to remain steady through April.
- Quality strong.
- Florida volume good.
- California organic production remains strong.

BROCCOLI CV/OG

- Desert production ending.
- Salinas harvest has begun.
- Possible slight volume drop until Salinas gets into full swing.

BRUSSELS SPROUTS

- Mexican production continues to be strong.
- Quality excellent.

CAULIFLOWER CV/OG

- Market expected to tighten next week.
- Desert production ending.
- Salinas ramps up production.

CELERY CV/OG

- Market expected to remain steady with strong production.
- No issues expected through transition.

CUCUMBERS

- Market limited with stronger pricing.
- Florida growers continue to rely on imports out of Honduras.
- Crossings out of Mexico starting to improve.
- Anticipating pricing will stay firmer due to strong domestic demand.

GRAPES

- Supply abundant.
- Quality excellent.
- Expecting excellent quality into April.

LETTUCE

- Market expected to remain active.
- Yuma volumes declining.
- Expecting seasonal demand to increase.
- Transition to Salinas starts in April.
- Anticipating mixed quality over next several weeks; working through end of Yuma harvest.

LETTUCE, BABY LEAF

- Quality challenging this week.
- Desert production ending.
- Insect pressure prevalent to end of desert season.
- Expecting insect pressure to improve the week of 04.14.25.

LETTUCE, LITTLE LEAF

- Caesar kits (#RM752) are back in production after a brief gap. Available now.



Produce *continued*

LEMONS CV/OG

- Market remains unchanged.
- Market remains steady with good supply and quality.

LIMES

- Market moving forward after tariff scare.
- Good weather in forecast for growing areas.
- Steady production expected for April.

MELONS

- Stable supplies from Guatemala.
- Cantaloupe pricing continues to settle.
- Honeydew pricing continues to settle.
- Anticipating lighter volume later in the month.
- Easter holiday expected to increase retail demand.

ONIONS

- Market remains unchanged. Market weak.
- Declining prices and ample Northwestern supply.
- Significant influx of yellow and white onions from Mexico adding pressure to domestic supply.
- Storage crop expected to last until mid-April.
- Storage crop quality high.
- Anticipate translucency issues in the next few months despite overall high quality.

ORANGES CV/OG

- Navel crop remains steady and heavy on smaller fruit.
- Now stocking 3 pack sizes on Ojai Pixie Tangerines:
- #ADC24- Bulk 25lb.
- #WA986- 9x3lb.
- #EK484- 9x2lb
- Organic Caras are done for the season.

PEPPERS

- Green Bell #1 product demands premium pricing.
- Mexican production steady and keeping up with demand.
- Florida production slightly behind with stronger pricing at the shipping point.
- Colored bell pepper market leveling off.
- Recent influx of product from Mexico.

POTATOES

- Market remains stable with a solid mix of cartons and consistent consumer demand.
- No significant price changes so far in 2025.
- A slight uptick in the market once most sheds transition to Burbank potatoes is possible.
- Burbank yields were slightly lower than the Norkotah's which could lead demand increase for available supply going into summer.
- Quality excellent, expecting no change through the spring.
- Expecting storage crops to show quality concerns closer to summer
- Freight availability out of Idaho remains abundant.
- Rates decreased to more favorable levels for most regions across the country.

RASPBERRIES CV/OG

- Market to remain steady through April.

STRAWBERRIES CV/OG

- Florida season ending.
- California production expected to increase through April.
- California production will peak in May and June.

TOMATOES

- Markets escalated on all varieties and packs.
- Florida's winter crop volumes affected by cold weather front and rain.
- Anticipating improvement in volume mid-April when fully transitioned into spring crop season.
- Virus and disease pressure affecting round tomato crop out of Mexico; volume has decreased dramatically.
- Anticipating no improvement on round tomato crop until early May or when new growing area starts with production.
- Mexican Roma and grape tomato markets seeing increased demand from the US.
- Increased demand driving pricing up.

ZUCCHINE/YELLOW SQUASH

- Volume and quality good on zucchini from all sources.
- Markets remain tight on yellow squash.
- Anticipating improvement with transition north to Sonora in two weeks.
- Eastern yellow squash expected to stay tight until S. Georgia transition in May.