



FEB 2026

# Harvest Highlights



Valid for Delivery Dates  
Feb 1-28, 2026



**FRESH HOUSE  
LOCAL FOCUS**

SEAFOOD

FLORAL

PRODUCE

SPECIALTY

MEAT

ESSENTIALS

All Pricing available  
through your BRP  
representative.

**Order Now  
800-228-5481**

Online 24x7 at  
[BlackRiverProduce.com](http://BlackRiverProduce.com)

## Juices

Natalie's

6 x 12 Oz

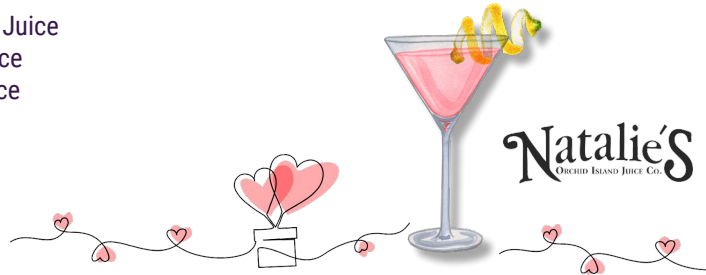
#TN452 Blood Orange Juice

#TN450 Grapefruit Juice

#TN330 Tangerine Juice

**\$1 Off/Cs**

## Valentine Cocktails Makers



**Natalie's**  
ORCHID ISLAND JUICE CO.



## Frozen Fruit Purees

Ravifruit

5 x 2.2 Lb

#EH932 Raspberry

#EH622 Passion Fruit



**\$3 Off/Cs**

## Chocolate Buttons

Cacao Noel

2 x 11 Lb

#WC954 Bittersweet 61%

#EJ802 Semi Sweet 55%

#EJ796 White 30%

#EJ798 Milk 35%

**\$10 Off/Cs**



## Soft Pretzel Bites

Bread Shed

#AVR56 Spent Grain Bites

6 x 145 Ea

#TTH38 Classic Bites

875 x.55 Oz

Frozen - 4pm Order Cut-off

**\$12 Off/Cs**



BREAD SHED



**NEW**



Also Available,  
Soft Pretzels /  
Sticks >>>>

## Lavendar Spice

Black River Produce

#EL362 | 1 x 4 Oz



**\$1 Off/Ea**

## Pasta Sauces

Mamodoro

6 x 24 Oz

#TR878 Tomato

#TR892 Basil

#TR884 Garlic



**\$2 Off/Cs** Vermont

# Quality Meats

## Maple Breakfast Sausage

Black River Meats

#PP072 | 5 x 4 Lb | 1 Oz Links



**\$.50/Lb** Vermont Grown

## Pork Shank Osso Bucco 2"

Black River Meats

#WA778

1 x 7 Lb



**\$.50 Off/Lb** Vermont Grown

## NY Strip Steak Boneless

Boyden Farm

#JH270 | 12 x 10 Oz



**\$17.75 Off/Cs**

## Beef Bottom Round

Boyden Farm

#GP372

1 x 12.5 Lb



**\$1.20 Off/Lb**

## Top Sirloin Butt

Boyden Farm

#GR500 | 10 x 12 Oz



**\$12.25 Off/Cs**

## Top Sirloin Butt

Boyden Farm

#WB194 | 2 x 9 Lb



**\$1.29 Off/Lb** Vermont

# It's all about the mascarpone.

#J4376 2 x 5 Lb

#N7292 12 x 8 Oz

VERMONT  
CREAMERY™



Black River Produce | Harvest Highlights | 800-228-5481 | All items subject to availability. | Deals not valid for contract pricing.  
Valid for delivery dates: February 1-28, 2026. Floral valid Feb 1-15 unless pricing extended based on market conditions.



# Dairy Deals

## Culinary Creams

Vermont Creamery

Mascarpone

#N7292 | 12 x 8 Oz

#J4376 | 2 x 5 Lb

Crème Fraîche

#L4390 | 12 x 8 Oz

#J4198 | 2 x 5 Lb

ESTD 1984

VERMONT  
CREAMERY®

## Cultured Butter Rolls

Vermont Creamery

12 x 16 Oz

#GH464 Unsalted

#EJ446 Sea Salt

**\$3 Off/Cs**



View Stocked  
Items List ^

**\$3 Off/Cs**

## Chevre Logs

Vermont Creamery

12 x 4 Oz

#EL814 Cranberry Orange & Cinnamon

#ATF52 Maple Chipotle - **New!**

#EP564 Strawberry Spritz

#WA188 Blueberry Lemon

#WC974 Clover Honey

#EP566 Honey Truffle

#WC280 Everything

#EJ246 Plain

#WC500 Herb

## Aged Cheeses

Vermont Creamery

#K2008 Bonne Bouche 6 x 4 Oz

#EJ810 St. Albans 9 x 2.8 Oz

#GH584 Cremont 6 x 5 Oz

#RE470 Hooper 6 x 5 Oz

#GH580 Bijou 6 x 2 Oz

#EJ240 Coupole

6 x 6.5 Oz

**\$3 Off/Cs**



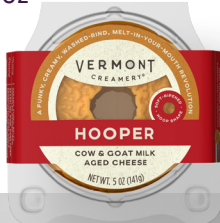
12 x 4 Oz

#GH586 Crumbles

12 x 10.5 Oz

#J4364 Plain

**\$3 Off/Cs**



Black River Produce | Harvest Highlights | 800-228-5481 | All items subject to availability. | Deals not valid for contract pricing.

Valid for delivery dates: February 1-28, 2026. Floral valid Feb 1-15 unless pricing extended based on market conditions.

# OrganicProduce



## Baby Bella Mushrooms

#EJ424 | 6 x 8 Oz



Organic **\$2 Off/Cs**

## Fennel

#WC772 | 12 Ct



Organic **\$2 Off/Cs**

## Green Peppers

#WC858 | 25 Lb



Organic **\$2 Off/Cs**

## Rainbow Chard

#WA954 | 24 Ct



Organic **\$2 Off/Cs**

## Navel Oranges

#NW678 | 88 Ct



Organic **\$2 Off/Cs**

## Limes

#WC548 | 200 Ct



Organic **\$2 Off/Cs**

# Deli-Bakery

## Buffalo Chicken Dip

Don's Salads

#JH062 | 2 x 5 Lb



**\$2 Off/Cs**

## Download our Deli Catalogue



## Ravioli Ricotta Large

Lilly's Pasta

#EH952 | 2 x 3 Lb | Frozen



**\$2 Off/Cs**

## Quinoa Mediterr. Salad

Don's Salads

#VL986 | 2 x 5 Lb



**\$2 Off/Cs**

## Spicy Black Bean w/ Corn

Don's Salads

#FR800 | 2 x 5 Lb



**\$2 Off/Cs**

## Castelvatrano Olive w/ Pit

Divina

#GR542 | 4 x 2 Lb



**\$4 Off/Cs**

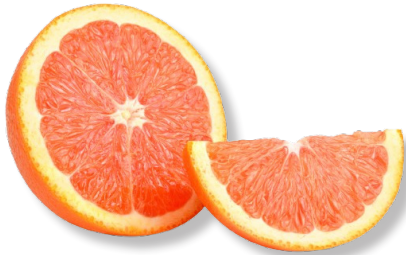
Black River Produce | Harvest Highlights | 800-228-5481 | All items subject to availability. | Deals not valid for contract pricing.  
Valid for delivery dates: February 1-28, 2026. Floral valid Feb 1-15 unless pricing extended based on market conditions.



# Conventional Produce

## Cara Cara Navel Orange

#C9094 | 20 Lb



**\$2 Off /Cs**

## Tri Color Fingerling Potato

#HG580 | 20 Lb



**\$2 Off /Cs**

## Chef's Blend Mushrooms

Cutone Mushrooms

#GH358 | 3 Lb | Wild



**\$2 Off /Cs**

New

Drink Concentrates



On the Docks in  
**February**

Fresh  
**Delicious**  
Citrus



Conventional:

WA160	Oranges, Navel	113 Ct
C9094	Cara Cara Navels	20 Lb
AW528	Blood Oranges	20 Lb
GK268	Grapefruit	48 Ct
WA140	Lemons	140 Ct

**\$2 Off /Cs**



## Red Beets

#EP982 | 25 Lb



**\$1 Off /Cs**

## Red Onions - Medium

#NH700 | 25 Lb



**\$1 Off /Cs**

## Chives

#CK126 | 4 Oz



**\$.50 Off /Ea**

Coming Soon

**Pixies**

Stay Tuned! Ever-popular **Pixies**  
are anticipated to arrive in  
mid-march!



# Seafood Savings

## Crab Cakes - Bulk

#EJ120 | 2 x 12 Ct



**\$1 Off/Cs**

## Cod Fish Cakes

Lagniappe

#WC956 | 16 x 3 Oz | Retail



**\$1 Off/Cs**

## White Shrimp

Bay Winds

#DV324 | 5 x 2 Lb Bags

21-25 P&D Tail-on

Raw

Frozen



**\$3 Off/Cs**

## Lobster Claw/Knuckle Meat

Fisher King

#EH050 | 6 x 2 Lb



**\$15 Off/Cs**

## Hot Honey Smoked Salmon

Duck Trap

#ARV38 | 8 X 4 Oz



**\$1 Off/Cs**

## PEI Mussels

#MC892 | 10 Lb Bag



**\$1 Off/Bag**

**Try Them All**

**PRODUCT OF MAINE**

## Be my Fancy Valentine



Microgreens



Edible  
Flowers



Tiny  
Veggies



Cocktail  
Garnishes



View list of all Fresh Origin items  
available through Black River Produce.





# Floral

## Mum Bouquet

#EJ396 | 8 per Cs  
UPC 787961011138



**\$93.99 /Cs**

## Featured Bouquets

Each month we stock a limited number of featured bouquets while supplies last.

Dozens of additional floral bouquets and seasonal stems available with 48-hour advance ordering. Note some colors/ varieties are subject to seasonal variations.

## Hyacinth Assorted

#GT260 | 15 Bunches per Cs



**\$139.99 /Cs**

## 7-Stem Bouquet

#EL168 | 10 per Cs  
UPC 787961012340



**\$97.99 /Cs**

## Rose Valentine Bouquet

#EL172 | 8 per Cs  
6 red/pink short rose



**\$104.99 /Cs**

*while supplies last through 2/14*

## Rose Lily Bouquet

#EL158 | 5 Bunches  
UPC 787961011336



**\$106.99 /Cs**

# Critical Communication

### PRESIDENT'S WEEKEND

Normal business hours will apply.

Please note Valentine's coincides President's weekend, so please be sure to help us get you the quantities you need, by getting your orders in early and notifying us of any volume bumps. Many of the unique and beloved items produced by our local farms and makers can require more lead time than the mass-produced pallets from national manufacturers. Any heads up you can provide us to help our farmers and makers is a win-win and is much appreciated

### EASE OF ORDERING

Our new and improved online ordering system truly does help you save time and money. From the ease of placing orders at the time most convenient for you, to the tremendous savings you can generate by implementing our robust inventory management tool and recipe costing tools, we are confident that it will be well worth the few minutes it takes to sign up!

Please reach out to your BRP representative to receive your user name and password.

### WINTER SAFETY

Please remember the importance of keeping your walkways clear of snow and ice. Ensuring that your paths are shoveled and safe will help us make timely and efficient deliveries to your location.

We appreciate your cooperation in maintaining clear access, as it allows us to provide you with the best possible service during the winter months. Please note that drivers may forgo delivery if they assess significant risk due to conditions.

Thank you!



# Valentine's Made Easy



Oysters & Caviar ▪ Meats & Fine Cheeses  
Roses & Floral ▪ Edible Flowers & Microgreens  
Stem Strawberries ▪ Melting Chocolates



Pre-order floral and  
stem strawberries.

