



# Fresh Seafood

## Regional, Seasonal Seafood List



Keep your menus fresh with the current seasonal availability. Report updated weekly.

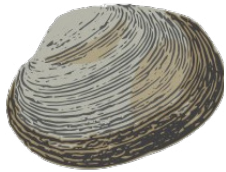
### In the Spotlight! 04.13.26

Description	Size Avg.	Unit	Source	Item #	Available for Deliveries
Shrimp Fresh Raw Shell on	16-20	LB.	Carolinas	NW958	Avail all week long.
Oyster Shucked Select	Gallon		Maryland	WB660	Avail all week long.

### In-Season Traditional Favorites 04.13.26

Description	Size Avg.	Unit	Source	Item #	Lead Time
Bass Wild Striped Fillet	3 - 4 Lb.	1 Lb.	Virginia	EH032	24-hour (not avail in N.H.)
Bluefish Fillet	1 - 3 Lb	10 Lb.	North Carolina	WB766	24-hour
Char Artic Fillet	1 - 2 Lb.	5 Lb.	Iceland	WC992	Stocked for Season
Char Artic Fillet	1 - 2 Lb.	10 Lb.	Iceland	AR984	Stocked for Season
Clam Whole Fryer Fresh 6:2 ratio	6# meat: 2# liquid.	Gal	Gulf of Maine	BD916	24-hour
Clam Steamer		10 Lb.	USA	BB914	24-hour
Cod Market	12 -16 Oz.	10 Lb.	Iceland	WB692	Stocked for Season
Cod Market	12 -16 Oz.	5 Lb.	Iceland	WC996	24-hour
Flounder	4 - 6 Oz.	10 Lb.	Gulf of Maine	WB690	24-hour
Flounder	4 - 6 Oz.	5 Lb.	Gulf of Maine	GG898	Stocked for Season
Grey Sole	2 - 4 Oz.	5 Lb.	Gulf of Maine	GG896	Stocked for Season
Haddock Large Skinless	12-16 Oz.	10 Lb.	Iceland	NW874	Stocked for Season
Haddock Scrod Skinless	6- 8 Oz.	10 Lb.	Gulf of Maine	WB642	Stocked for Season
Haddock Scrod Skinless	6- 8 Oz.	5 Lb.	Gulf of Maine	EP170	Stocked for Season
Hake Fillet	1 - 2 Lb.	5 Lb.	Gulf of Maine	GG906	24-hour
Halibut Fillet	1 Lb.	Lb.	Canada	EL142	Stocked for Season
Lemon Sole	8 - 12 Oz.	10 Lb.	Gulf of Maine	WA096	Stocked for Season
Lemon Sole	8 - 12 Oz.	5 Lb.	Gulf of Maine	GG906	Stocked for Season
Lobster Live Hard Shell	1-1.5 Lb.	Each	USA / Canada	EH046	Stocked for Season
Monkfish	10 - 20 Oz.	10 Lb.	Gulf of Maine	WB696	Stocked for Season
Monkfish	10 - 20 Oz.	5 Lb.	Gulf of Maine	WC998	Stocked for Season
Perch Ocean Fillet	2-4 Oz	10 Lb	Gulf of Maine	WB776	Stocked for Season
Pollack	8 - 16 Oz.	10 Lb.	Gulf of Maine	WB684	Stocked for Season
Pollack	8 - 16 Oz.	5 Lb.	Gulf of Maine	GG908	Stocked for Season
Salmon Faroe Island Whole	11 - 15 Lb.	Each	Faroe Islands	AT406	24-hour
Shrimp Fresh Raw Shell on	16-20	1 Lb.	Florida	NW958	Stocked for Season
Salmon Coho Wild Fillet	1-1.5 Lb	Lb.	USA	NW914	Season has ended.
Skate Fillet	6 - 12 Oz.	Lb.	Gulf of Maine	NW884	48-hour
Steelhead Trout Fillet	1.5 Lb.	Lb.	Norway	EH040	Stocked for Season
Swordfish Cut Loin	1 Lb.	Lb.	Varies	NW860	Stocked for Season
Trout Rainbow 10 Oz	5 Lb Tray	Each	Idaho	WB709	Stocked for Season

Call for best price. Available while supplies last. Please give advance notice for large orders.



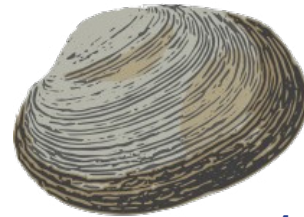
1 “

## Countneck Clams

10-13 Count per pound

#WB674 Countneck Clams 25Ct. Stocked.

#WB786 Countneck Clams 100Ct. Stocked.



1 1/2 “

## Littleneck Clam

5-7 Count per pound

#WB672 Little Neck Clams 25Ct. Stocked.

#EP230 Little Neck Clams 100Ct. Late line.



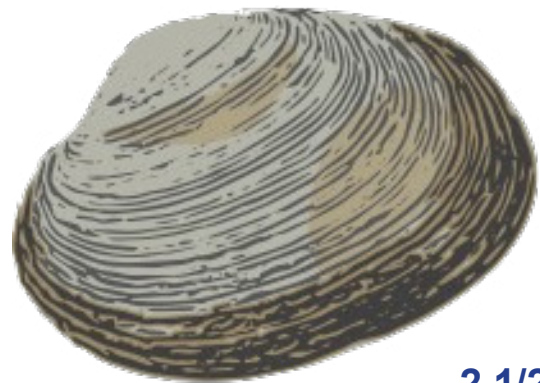
2 “

## Cherrystone Clam

3-4 Count per pound

#NW796 Cherrystone Clam 25Ct. Late line.

#VT044 Cherrystone Clam 100Ct. Late line.

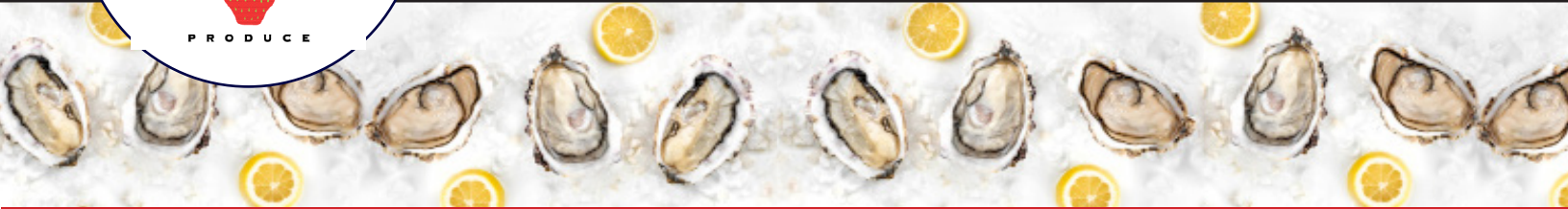


2 1/2 “

## Quahog Clam

1-2 Count per pound

#AM496 Quahog Clams 100 Ct. Late line.



## Oyster Availability

Description	Pack Size	Item #	Lead Time
<p><b>Beau Soleil</b> – These oysters are sourced through the pristine North Atlantic waters which enshrine the Acadian Peninsula of New Brunswick, Canada. Each box of Beau Soleil oysters are handpicked and packed. One at a time, the oysters are placed in the wooden box, cup side down, to preserve the liquor. Although these oysters do have a shell that is on the smaller side, the meat is that of which you would find in a substantially larger shell. Size 2.75"</p>	25ct. 100ct	NW822 NW820	Stocked for Season
<p><b>Black Magic</b> – These choice, farm-raised, Canadian oysters from Prince Edward Island, have indoor, wet storage, fed by a natural saltwater well that completely eliminates disruptions in harvesting or production due to inclement weather. Shells are round and deep ensuring a full, plump oyster. Black Magic oysters are easy to shuck and have a salty taste with a sweet finish. Size 2.75"</p>	100ct	VP360	24-hour
<p><b>Blue Point</b> – This is a large oyster from Northwest Long Island Sound. Crisp, firm textured with a high brininess. One of the best-known oysters out there.</p>	25ct.	WB664	Stocked for Season
<p><b>Cape Cod Bay</b> – These oysters are a very uniform, briny, light bodied oyster from the Cape. Medium size, very good oyster for the price. Size 3 - 3.25"</p>	100ct	EP090	Stocked for Season
<p><b>Cupid's Choice</b> – Top Grade Choice oysters harvested in the pristine waters of Prince Edwards Island. Full plump bellies are incased by clean round shells with deep cupped bottoms. They are handsome in appearance. A Tender meaty oyster with a sweet brine. Size 2.75 - 3"</p>	25ct 100 ct	GG810 MA898	24-hour
<p><b>Duxbury</b> – Unusual southwest winds in Duxbury Bay, forty miles south of Boston, sometimes create a natural up-welled effect, blowing warm surface waters across Cape Cod Bay to Wellfleet and drawing up cold, extremely salty water from the bottom. The plain white shells attest to life in off-bottom bags and cold, hyper-salty environments. If you like brutally briny oysters, Duxbury's will be among your favorites. Size 3"</p>	25ct. 100ct	WB668 NW842	Stocked for Season
<p><b>French Kiss</b> – Farm raised in Miramichi Bay, New Brunswick, Canada. Often described as larger, matured 5-7 years versions of the famous Beau Soleil Oyster. These premium oysters feature deep, paisley-shaped shell, firm/plump meat. distinct flavor of sharp, bright salinity by a sweet, slightly nutty finish. Size 3-3.5+".</p>	25ct 100ct	NW826 NW824	24-hour

Call for guidance from our experts: Lisa Brown: 802-886-6255 Katie Metcalf: 802-886-6254

For pricing, contact your BRP sales associate, or log into your CustomerFirst online ordering account.

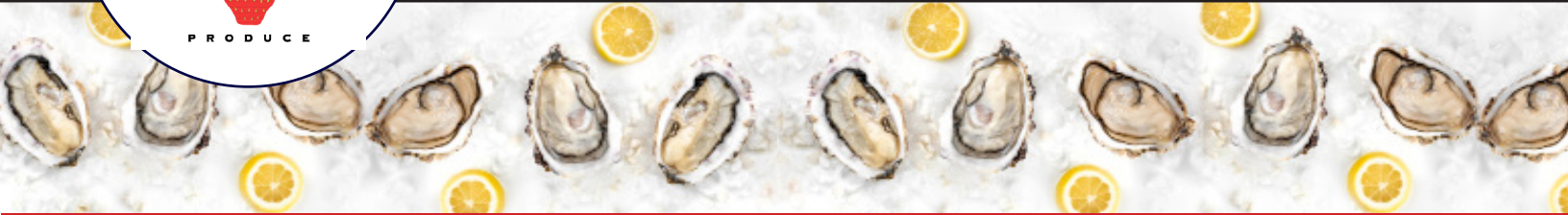


## Oyster Availability

Description	Pack Size	Item #	Lead Time
<b>Honeymoon</b> – Grown in the Bay of New Brunswick, this variety of oyster is renowned for its firm, rich, plump flesh, and salty flavor with a sweet, slightly lemony finish.	100ct	PE912	24-Hour
<b>Independence Bay</b> – Grown in the clean, cold waters of Cape Cod Bay using proven aquaculture methods designed to deliver consistency, quality, and approachability. Flavor: a clean, classic oyster with a bright brine and a gentle touch of natural sweetness, finishing smooth and refreshing. Size 2.5" - 3.0" (petite)	100ct	HAC74	Stocked for now.
<b>Irish Point</b> – From Rustico, Hunter River, in Prince Edward Island, these oysters boast excellent meat and a superb salty taste due to the cold water and strong tides. Size 2.75"	25ct 100ct	NW826 NW824	Stocked for Season
<b>Island Creek</b>	100ct	AKV60	48-Hour
<b>Katama Bay</b> - Located on the eastern end of Martha's Vineyard, these oysters are grown and harvested in an entirely environmentally sustainable fashion. The shells of the Katama Bays are about three-and-a-half inches long and are just as strong as they are clean with a deep cup. The meats are full and possess a high degree of salinity. Size 3.5 - 4"	100ct	NW832	Stocked for Season
<b>Malpeque</b> – From Prince Edward Island, these oysters are light-bodied and easy to eat, with the perfect balance of sweetness, brine, and pickle-like liveliness. Size 2 - 2.25"	25ct 100ct	WB666 MD540	25 Ct Stocked 100 Ct. 24-hour
<b>Patriot</b> - These oysters start their life at the tidal flats of Crowes Pasture Beach in East Dennis, MA, where the Quivett Creek and Cape Cod Bay meet. The oysters grow elevated roughly 3-4 inches off the bottom of the sea floor, then are tumbled and sized. Oysters have a tear-drop shape. Flavor profile is described as having plump meats with medium brine containing notes of umami and clean sweet mineral finish. Size 3 -3.5"	100ct	RW110	Stocked for now.
<b>Pemaquid</b> – From the Damariscotta River in Maine, these 3 ¼ inch oysters have dense, chip resistant shells. The meats are full and pleasantly firm with a bright burst of brine which yields to a medium sweetness. Size 3 - 4"	25ct 100ct	NW370 NW838	Stocked for Season
<b>Savage Blondes</b> – Known for their smooth, blonde shells, clean appearance and taste. These tide-tumbled, northern PEI oysters are constantly jostled by the sea, which create beautiful, strong shells, perfect for shucking. Size 2.75"	100 ct.	FV994	Stocked for Season

Call for guidance from our experts: Lisa Brown: 802-886-6255 Katie Metcalf: 802-886-6254

For pricing, contact your BRP sales associate, or log into your CustomerFirst online ordering account.



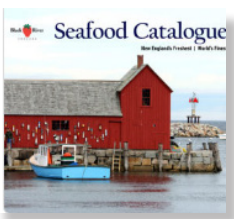
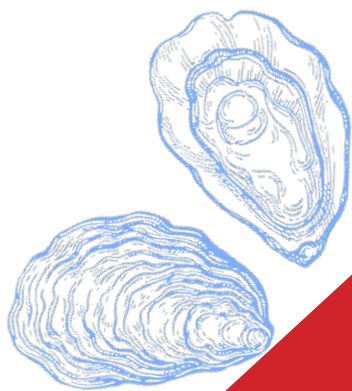
## Oyster Availability

Description	Pack Size	Item #	Lead Time
<p><b>Sweet Neck Farm</b> – Sweet Neck Farm oysters are roughly three-and-a-half to four inches in length, are deeply cupped, and are high-yielding. Salinity of the Sweet Necks is high (MV is more or less out in the open ocean), and meats are pleasantly firm with a mild simple sugar finish. Size 3.5 - 4"</p>	100ct	GN648	24-hour
<p><b>Sweet Petites</b> – Are cultivated in the pristine waters of Canada’s Prince Edward Island. Their thick russet shells, measuring to 2 1/2, enclose fattened meats that possess a delightful brine and mild chew. Size 2.5 - 3"</p>	25ct 100 ct	GG808 MA900	Stocked for Season
<p><b>Wellfleet</b> – Raised in the beautiful town of Wellfleet on Cape Cod. Plump meats with a mild, sweet flavor, high brininess and a crisp, clean finish. This week’s come from the farmer Patrick Winslow, part of the Wellfleet farmer cooperative. Size 3 - 3.5"</p>	25ct 100ct	WB670 NW814	Stocked for Season

Black River Produce is your gateway to the world’s finest seafood.

- Daily trips to the Boston pier, Monday - Friday.
- Domestic and international sourcing.
- Full Transparency; you will always know the source of your product; we take the chain of custody very seriously.
- On-site cutting facility for halibut & swordfish.
- Two, 1,000-gallon live lobster tanks for maximum freshness.

Our seasoned Seafood Buying Team always has the time to help you navigate your seafood needs. Just give us a call.



View our full seafood catalogue of fresh and frozen items at [BlackRiverProduce.com](http://BlackRiverProduce.com) or scan the QR code here.

**Call for Pricing**  
**Lisa Brown: 802-886-6255**  
**Katie Metcalf: 802-886-6254**